

# Agricultural Pollution Control Project

Klaus Wagner

Federal Institute of Agricultural Economics, Vienna

Marxergasse 2  
1030 Vienna  
+43 1 8773651 7428  
[Klaus.wagner@awi.bmlfuw.gv.at](mailto:Klaus.wagner@awi.bmlfuw.gv.at)



BUNDESANSTALT für Agrarwirtschaft  
FEDERAL INSTITUTE of Agricultural Economics

K. Wagner, Zagreb, 2012.07.12.  
p. 1

# EU regulation draft 627 on support for RD for the period 2014-2020

Selected Measure	Article in EU regulation draft 627	Topics of support	Maximum amount of support *
Organic farming	30 Organic farming	<b>Conversion or maintenance</b> of organic farm practices with minimum requirements, beneficiaries are farmers, groups of farmers or other land managers, for 5-7 years, annually payments.	<p>€ 600/ha/year annual crops</p> <p>€ 900/ha/year perennial crops</p> <p>€ 450/ha/year other land uses</p>
Reduced fertilizing	<p>29 Agri-environment- climate  and/or</p> <p>31 Natura 2000 and water framework directive payments</p>	<p>Environmental commitments <b>beyond mandatory standards</b>, beneficiaries are farmers, groups of farmers or other land managers, for 5-7 years, annually payments;</p> <p>Specific requirements of major changes in type land use of areas <b>included in river basin management plans</b> in accordance with the water framework directive, beneficiaries are farmers</p>	<p>€ 600/ha/year annual crops</p> <p>€ 500/ha/year (initial period of 5 years, then € 200)</p>

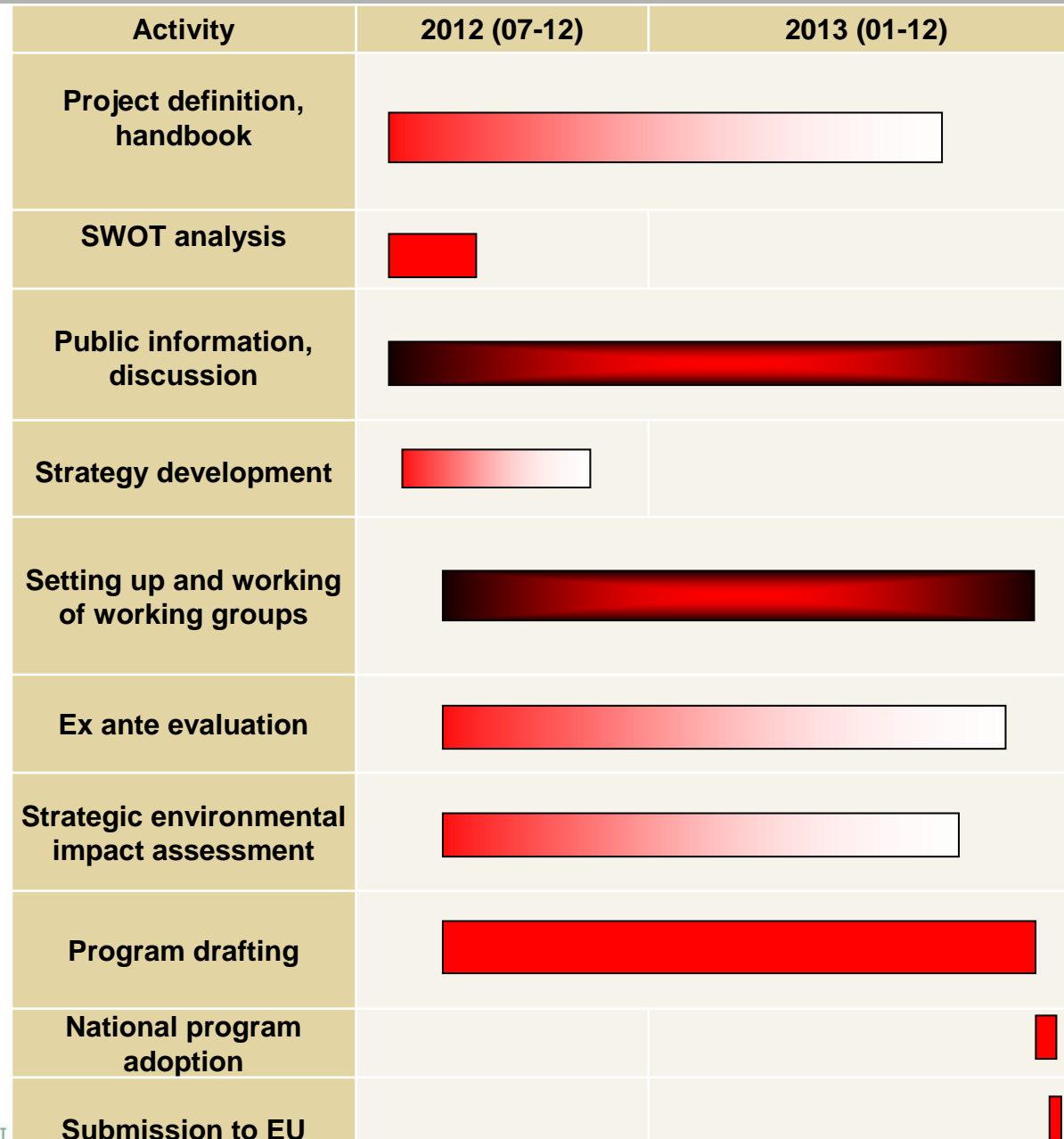
\* May be increased under specific circumstances

# EU regulation draft 627 on support for RD for the period 2014-2020

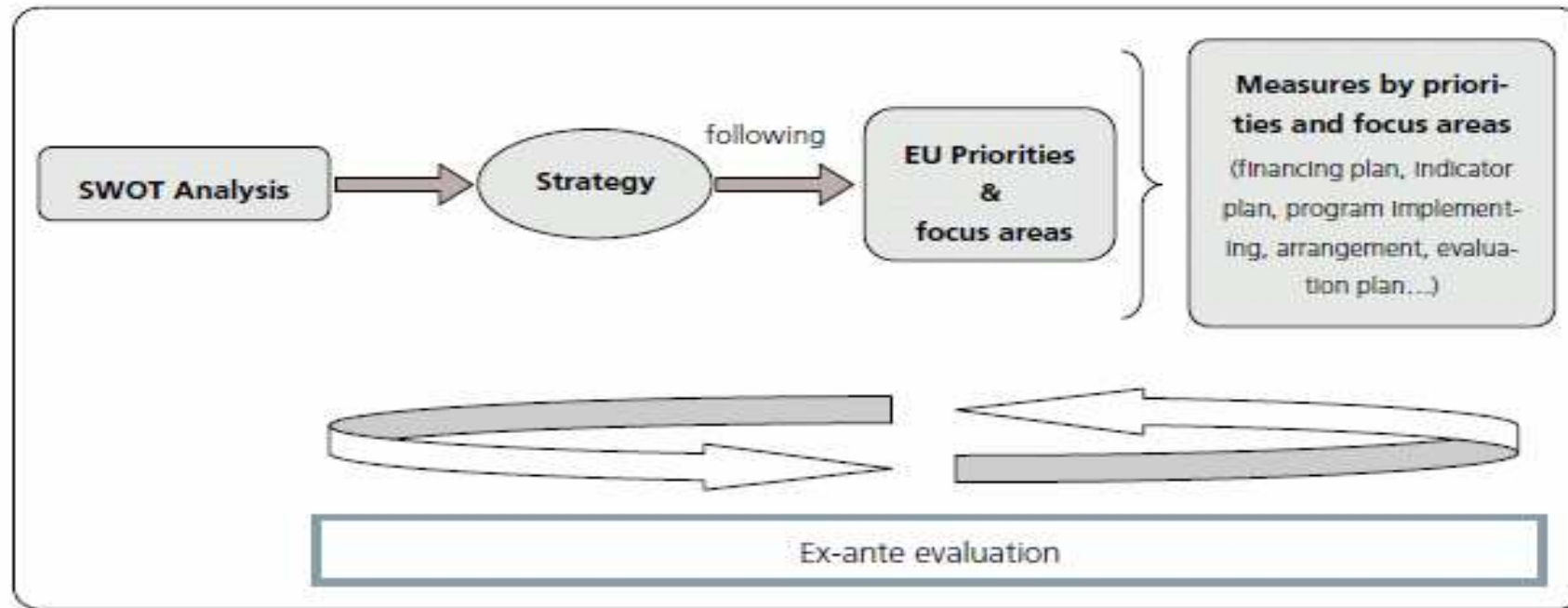
Selected Measure	Article in EU regulation draft 627	Topics of support	Maximum amount of support *
Catch crops on arable land	29 Agri-environment-climate	Environmental commitments <b>beyond mandatory standards</b> , beneficiaries are farmers, groups of farmers or other land managers, for 5-7 years, annually payments	€ 600/ha/year annual crops
Erosion control on permanent crops	29 Agri-environment-climate	Environmental commitments <b>beyond mandatory standards</b> , beneficiaries are farmers, groups of farmers or other land managers, for 5-7 years, annually payments	€ 900/ha/year perennial crops
Promotion, advisory, training	16 advisory services	Advice shall be linked to one of the <b>EU priorities</b> , beneficiaries are the providers of advice or training or the authority to set up the advisory service.	€1.500 per advice €200.000 per three years for the training advisors

\* May be increased under specific circumstances

# RD implementation process



# Ex ante evaluation as an accompanying process



Checking against various objectives, priorities of:

- Europe 2020 strategy, CAP
- Common strategic framework
- Cross cutting objectives (innovation, climate change, environment)
- National partnership contract
- Rural development priorities

Evaluation plan

Indicator system  
(context, output, result, impact)